

F.S. NOTES:

— GENERAL

1. IN ACCORDANCE WITH "CODES OF PRACTICE FOR MINIMUM FIRE SERVICE INSTALLATIONS AND EQUIPMENT", CLAUSE 4.14, THE PROVISION OF HOSE REEL SYSTEM, FIRE ALARM SYSTEM, EMERGENCY LIGHTING, EXIT SIGN, PORTABLE HAND OPERATED FIRE FIGHTING EQUIPMENT AND SECONDARY SOURCE OF ELECTRICAL SUPPLY SHALL BE PROVIDED FOR THE PROPOSED TEMPORARY SHOP AND SERVICES.
 2. THE AGGREGATE AREA OF PROPOSED STRUCTURE DOES NOT EXCEED 2300M². THUS, AN AUTOMATIC SPRINKLER SYSTEM SHOULD NOT BE INSTALLED.
 3. HOSE REELS REFER TO CLAUSE 5.14(b) IN THE CODE OF PRACTICE FOR MINIMUM FIRE SERVICE INSTALLATION AND EQUIPMENT APRIL 2012.
- H.R. SYSTEM
1. ON-OFF TYPE HOSE REEL NOZZLES HOUSED IN GLASS-FRONTED CABINETS WITH PADLOCKS SHALL BE INSTALLED AT LOCATION NOT HIGHER THAN 1350 AFFL.
 2. HOSE REEL INSTRUCTION PLANS SHALL BE PROVIDED FOR ALL HOSE REELS.
 3. THE LENGTH OR RUBBER HOSES SHALL NOT BE MORE THAN 30m.
 4. DUTY AND STANDBY FIXED FIRE PUMPS SHOULD BE PROVIDED FOR THE HOSE REEL SYSTEM.
 5. MANUAL FIRE ALARM CONTROL PANE SHOULD BE PROVIDED AS INDICATED ON G/F FOR FIRE ALARM SIGNALS OF THE HOSE REEL SYSTEM.
 6. THE HOSE REEL BRANCH NOZZLE SHALL HAVE A 4.5mm ORIFICE AND BE FITTED WITH A SIMPLE TWO WAY VALVE TO OPEN OR SHUT OFF JET. THE VALVE MUST NOT BE SPRING LOADED.
 7. ALL FIRE SERVICE INSTALLATIONS SHOULD FULLY COMPLY WITH THE CURRENT REQUIREMENTS OF THE FIRE SERVICES DEPARTMENT AND THE WATER SUPPLIES DEPARTMENT.
 8. HOSE REELS REFER TO CLAUSE 5.14(b) IN THE CODE OF PRACTICE FOR MINIMUM FIRE SERVICE INSTALLATION AND EQUIPMENT APRIL 2012.
 9. ELECTRICAL CABLES FOR FIRE ALARM BELLS AND FIRE SERVICES PUMPS SHALL BE FIRE RESISTING TYPE COMPLYING WITH BS6397 CAT CWZ.
 10. A NEW FIBERGLASS F.S. WATER TANK OF EFFECTIVE STORAGE CAPACITY NOT LESS THAN 2000 LITERS SHALL BE PROVIDED ON G/F FOR HOSE REEL SYSTEM.
- FIRE ALARM SYSTEM
1. ACTIVATION OF ANY BREAKGLASS UNIT IN THE BUILDING WILL START THE FIXED FIRE PUMP AND SOUND ALL THE ALARM BELLS IN THE WHOLE BUILDING.
 2. THE CAPACITY OF BATTERY IS SUFFICIENT TO MAINTAIN THE SYSTEM IN NORMAL CONDITION FOR 24 HOURS (A.F.A. SYSTEM) AND IT SHALL BE ABLE TO OPERATE THE SYSTEM AT ALARM CONDITION FOR 30 MINUTES.

— OTHERS

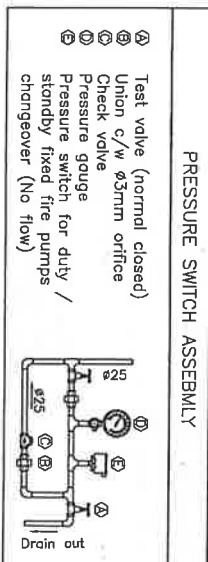
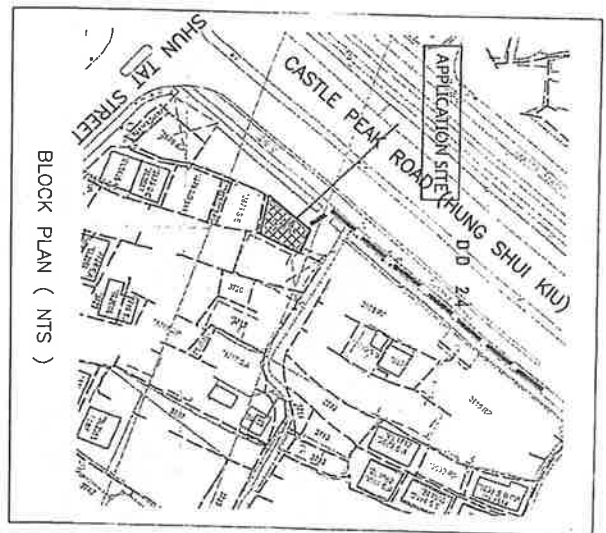
1. ALL EXITS AND EXIT ROUTES SHALL COMPLY WITH CODE OF PRACTICE & FSD C.L. 5/08 AND TO BE CLEARLY INDICATED BY ILLUMINATED "EXIT" "EXIT" SIGN AND DIRECTIONAL SIGNS IN CHINESE AND ENGLISH CHARACTERS OF NOT LESS THAN 125MM HIGH W/. 15MM WIDE STROKES.
2. EMERGENCY LIGHTING SHALL COMPLY WITH BS EN 1838/1999 AND TO BE PROVIDED THROUGHOUT THE ENTIRE BUILDING AND SHALL COMPLY WITH BS 5266: PART 1 AND BS EN 1838 EXCEPT THAT OF EXIT SIGNS.

ABBREVIATIONS

F/A	FROM ABOVE
F/B	FROM BELOW
T/A	TO ABOVE
T/B	TO BELOW
L/L	LOW LEVEL
M/L	MIDDLE LEVEL
H/L	HIGH LEVEL
AFFL	ABOVE FINISHED FLOOR LEVEL
F.S.	FIRE SERVICES
HR	FIRE HOSE REEL
M.H.	ACCESS MANHOLE
V.P.	VENT PIPE
O.F.	OVERFLOW PIPE
MFA	MANUAL FIRE ALARM

LEGENDS

	FIRE HOSE REEL
	MFA CALL POINT UNIT (BREAKGLASS TYPE)
	FIRE ALARM BELL
	MFA CONTROL PANEL
	FIXED FIRE PUMP CONTROL PANEL
	FIXED FIRE PUMP SETS ARRANGEMENT
	FIXED FIRE PUMP
	GATE VALVE
	CHECK VALVE
	BALL FLOAT VALVE
	AUTOMATIC AIR VENT
	CHECK METER POSITION
	PRESSURE SWITCH ASSEMBLY
	EXIT SIGN
	EMERGENCY LIGHT (WALL MOUNT)
	5KG CO2 PORTABLE FIRE EXTINGUISHER
	FLASHING LIGHT



COLOUR CODE FOR PIPE SIZE	
PIPE SIZE	COLOUR
Ø25	GREEN
Ø40	PURPLE

Project: F.S. LAYOUT PLAN OF PROPOSED TEMPORARY SHOP AND SERVICE (REAL ESTATE AGENCY) AT LOT 3674 RP IN D.D124, SUN FUNG WAI, TUEN MUN, N.T.

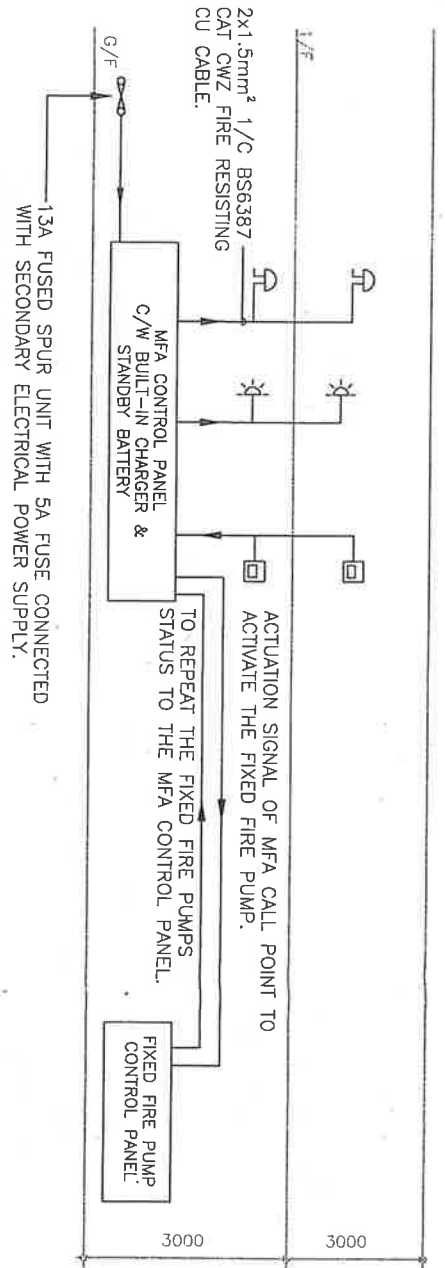
Drawing Title: F.S. NOTES, ABBREVIATIONS, LEGENDS, BLOCK PLAN, COLOUR CODE FOR PIPE SIZE AND PRESSURE SWITCH ASSEMBLY

FSI Contractor:

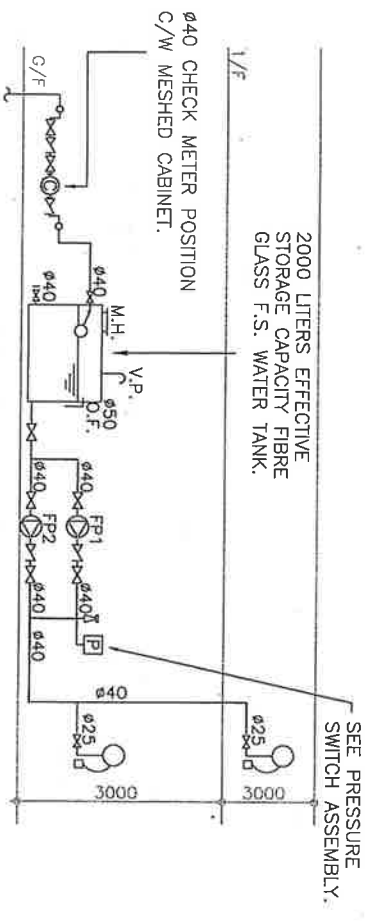
基業消防工程有限公司
KEI YIP FIRE ENGINEERING LTD.

Rm. 727A, Block 1, Wang Cheong Factory Estate, Chung Shui Wan, Kin. Email: yuenfaice@ychee.com.hk
Tel.: (852) 2387 8772 Fax: (852) 2748 0011

Cad Ref: PTS/FS/DWG-01	Dwg. Date: 17-NOV-2015	Dwg. No. FS-01	Rev
Scale: NTS	Drawn: P.L. YAU	Checked: CAD	
DATE	DESCRIPTION		
4/2017	AS PER PLANNING DEPARTMENT COMMENT 30/3/2017		4
11/2018	AS-FITTED		5



SCHEMATIC CONTROL WIRING DIAGRAM FOR MFA SYSTEM

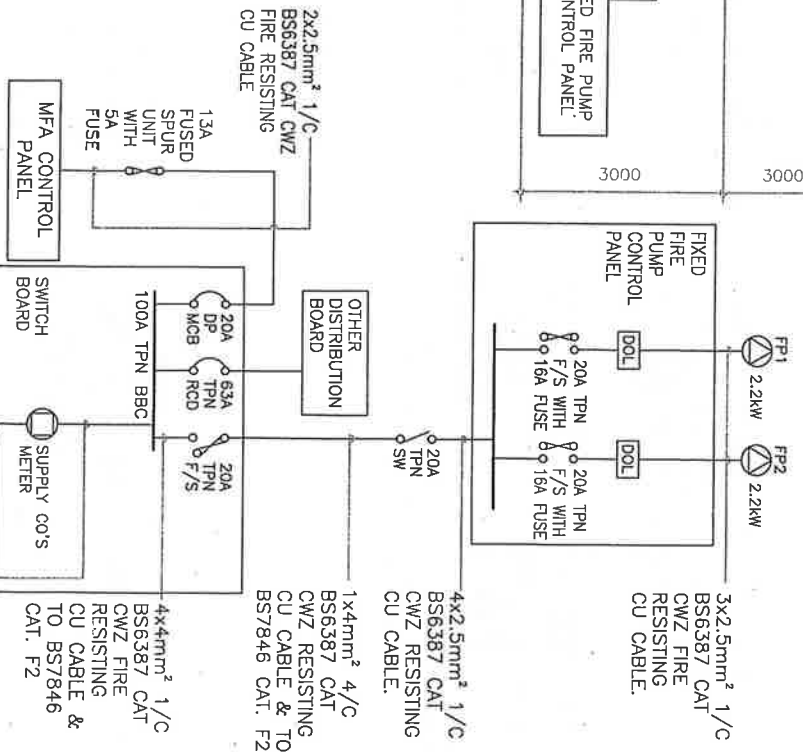


SCHEMATIC PIPING DIAGRAM FOR HOSE REEL SYSTEM

STATUS OF FIXED FIRE PUMP LOADING PANEL

1. FP1 POWER SUPPLY ON
2. FP1 PUMP RUNNING
3. FP1 PUMP FAILED
4. FP2 POWER SUPPLY ON
5. FP2 PUMP RUNNING
6. FP2 PUMP FAILED
7. F.S. WATER TANK WATER HIGH LEVEL.
8. F.S. WATER TANK WATER LOW LEVEL.

FIXED FIRE PUMP SCHEDULE			
PUMP CODE	DESCRIPTION	PUMP MOTOR POWER RATING (kW)	FLOW RATE PUMP HEAD (L/min) (BAR)
FP1	FIXED FIRE PUMP	2.2	36
FP2	(DUTY & STANDBY)		5



PRIMARY AND SECONDARY POWER SUPPLY WIRING DIAGRAM FOR F.S. SYSTEM

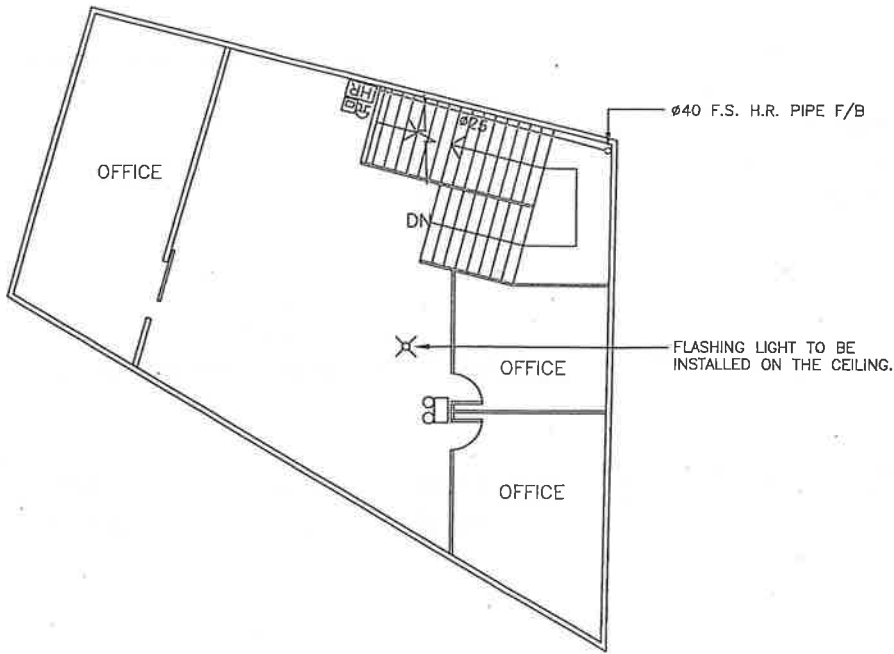
Project:
F.S. LAYOUT PLAN OF PROPOSED TEMPORARY SHOP AND SERVICE (REAL ESTATE AGENCY) AT LOT 3674 RP IN D.D124, SUN FUNG WAI, TUEN MUN, N.T.

Drawing Title:
FIXED FIRE PUMP SCHEDULE, STATUS OF FIXED FIRE PUMP LOADING PANEL, SCHEMATIC PIPING DIAGRAM FOR HOSE REEL SYSTEM, SCHEMATIC CONTROL WIRING DIAGRAM FOR MFA SYSTEM & PRIMARY AND SECONDARY POWER SUPPLY WIRING DIAGRAM FOR F.S. SYSTEM.

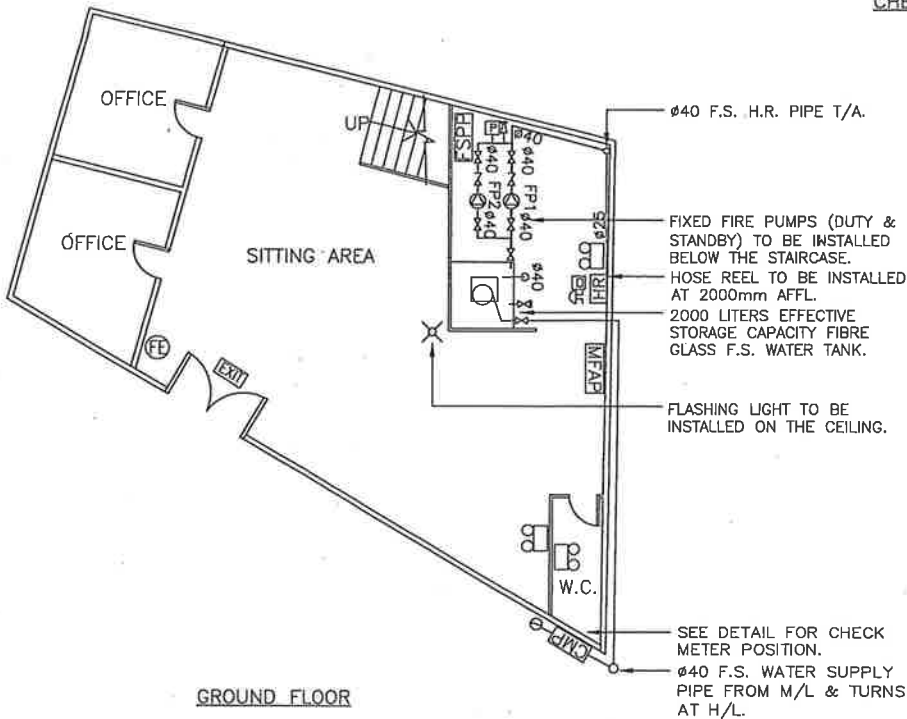
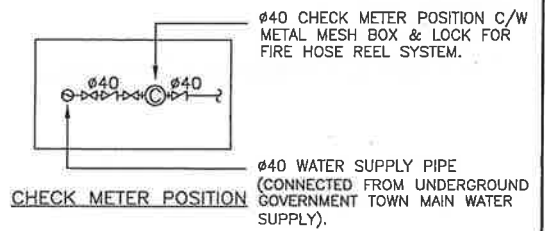
FSI Contractor:
基業消防工程有限公司
KEI YIP FIRE ENGINEERING LTD.

Rm. 727A, Block 1, Wang Cheong Factory Estate, Cheung Shu Wan, Kin. Email: yuenfatco@yahoo.com.hk Tel.: (852) 2387 8772 Fax: (852) 2748 0011

Cad Ref: PTS/FS/DWG-01	Dwg. Date: 17-NOV-2015	Dwg. No. FS-02	Rev
Scale: NTS	Drawn: P.L. YAU	Checked: CAD	
DATE	DESCRIPTION		
4/2017	AS PER PLANNING DEPARTMENT COMMENT 30/3/2017		4
11/2018	AS-FITTED		5



1ST FLOOR



GROUND FLOOR

Project:
F.S. LAYOUT PLAN OF PROPOSED TEMPORARY SHOP AND SERVICE (REAL ESTATE AGENCY) AT LOT 3674 RP IN D.D124, SUN FUNG WAI, TUEN MUN, N.T.

Drawing Title:
F.S. FLOOR LAYOUT PLAN OF GROUND FLOOR AND FIRST FLOOR, FIXED FIRE PUMP SETS ARRANGEMENT & CHECK METER POSITION

FSI Contractor:

基業消防工程有限公司
KEI YIP FIRE ENGINEERING LTD.

Rm. 727A, Block 1, Wang Cheong Factory Estate, Cheung Sha Wan, Kln. Email: yuenfatco@yahoo.com.hk Tel.: (852) 2387 8772 Fax: (852) 2748 0011

Cad Ref: PTS/FS/DWG-01	Dwg. Date: 17-NOV-2015	Dwg. No. FS-03	Rev
Scale: 1 : 100@A3	Drawn: P.L. YAU	Checked: CAD	
DATE	DESCRIPTION		
4/2017	AS PER PLANNING DEPARTMENT COMMENT 30/3/2017		4
11/2018	AS-FITTED		5